

There are some ways to arrive to Kaunas:

1a) From Vilnius Airport to Kaunas Airport:

<http://www.airport-bus.lt/index.php?lang=en>

Ticket price (advanced booking through this webpage): 25 LTL

Regular price: 35 LTL

Foreign currencies are not accepted due to national laws, sorry.

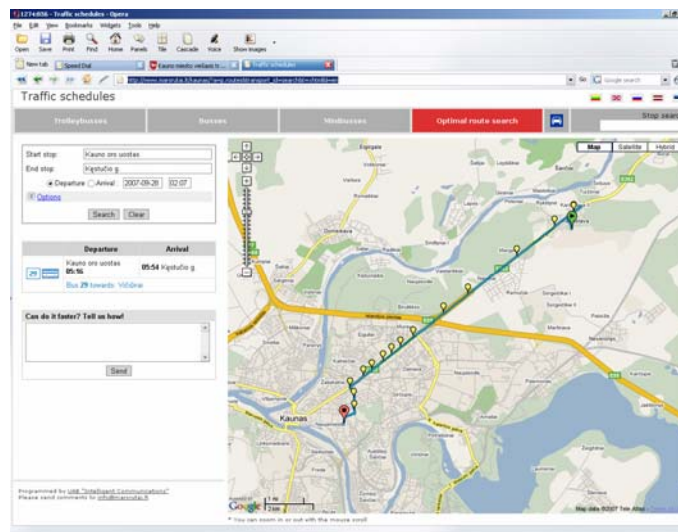
1b) From Kaunas Airport (time table: <http://www.kaunasair.lt/index.php?lang=2&m=2&p=210>) to Kaunas city centre:

- by taxi (about 40Lt) (drive will take 15-20min)

Taxi company "Einesa" offers safe, convenient and quick transportation to any of your destinations from the airport.

**To call for taxi to the airport: +370 37 331 633 or +370 37 331 533**

- You can reach Kaunas airport from the city centre on shuttle bus **No. 120**, which goes on the following route: Kaunas old castle bus stop - Savanoriu Avenue – Kaunas Airport (Karmelava).
- A city bus line **No. 29** also serves the airport going on the route Kaunas Airport (Karmelava) – Savanoriu Ave. – Bus station – Panemune – Viciunai. You need to get off at stop **Kestucio str.**



Optimal route search:

[http://www.marsrutai.lt/kaunas/?a=p.routes&transport\\_id=search&t=xhtml&l=en](http://www.marsrutai.lt/kaunas/?a=p.routes&transport_id=search&t=xhtml&l=en)

Start stop: Kauno oro uostas;

End stop: Kestucio

1c) From **Vilnius Airport** to Kaunas city centre:

If you arrive from the Vilnius International Airport, you need to take bus No. 2 and get off at the *Bus station* bus stop. The Bus station is within 200 meters walk. Drive by cab from the Vilnius International Airport to Vilnius Bus station will take 15 - 20 min.

You should take bus to Kaunas:

Vilnius Bus station Tel.: 1661; 8 900 01661 <a href="http://www.toks.lt">http://www.toks.lt</a>
Kaunas Bus station Tel.: (8 37) 40 90 60, 40 90 61 <a href="http://www.kautra.lt">http://www.kautra.lt</a>

A bus goes more than 20 times per day (Ticket costs about 20Lt).


From bus station (Vytauto str.) you can take trolleybus Nr. 14 (3 stops) or bus Nr.35 or minibus Nr 27

Start stop:

End stop:

Departure  Arrival :

[Options](#)

	Departure	Arrival
	Autobusų stotis <b>13:19</b>	<b>13:23</b> Gedimino g.
	Trolleybus 14 towards: Islandijos pl.	

Can do it faster? Tell us how!

